

Waldfeststellung Gesamtplan

Vom Kantonsforstamt St. Gallen erlassen:
Die Kantonsberförstern


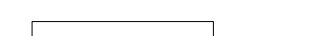

Öffentliche Auflage:
In Rechtskraft erwachsen:
Die Kantonsberförstern

M 1:5'000
27. Mai 2024
Mitwirkung | 2. VP


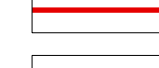
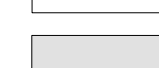
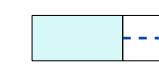
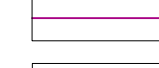
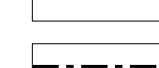
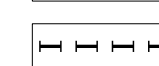


raum.
manufaktur.ag
stadt land verkehr

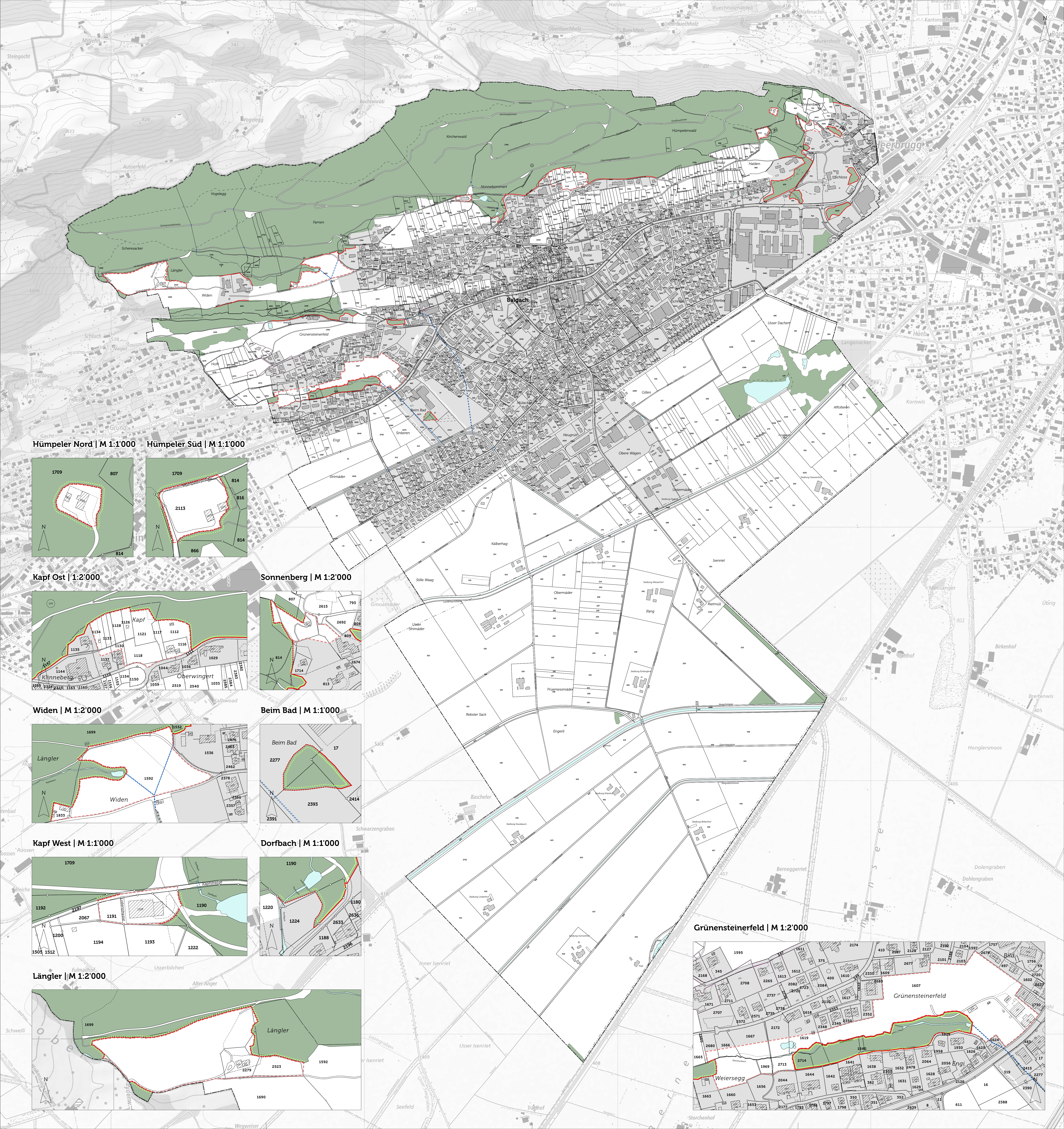
raum.manufaktur.ag
Feldstrasse 11A
9000 St. Gallen
071 555 03 30
info@raummanufaktur.ch
www.raummanufaktur.ch

Festlegungen

-  Waldgrenze, neu
-  Stockgrenze, neu
-  Gebiet mit statischer Waldgrenze ausserhalb Bauzone

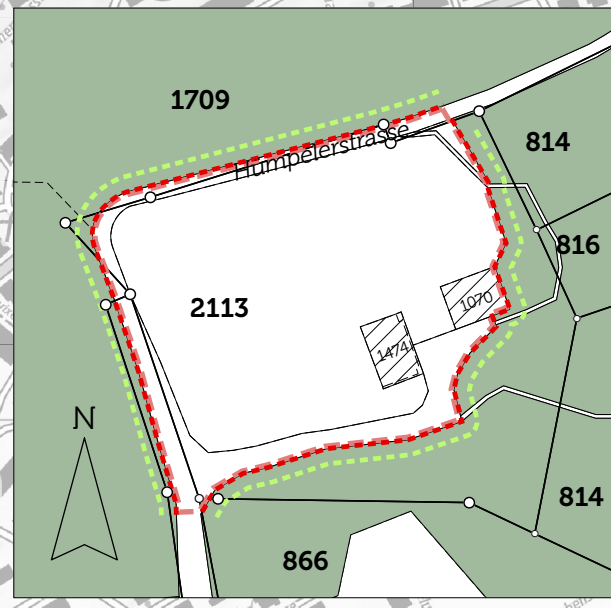
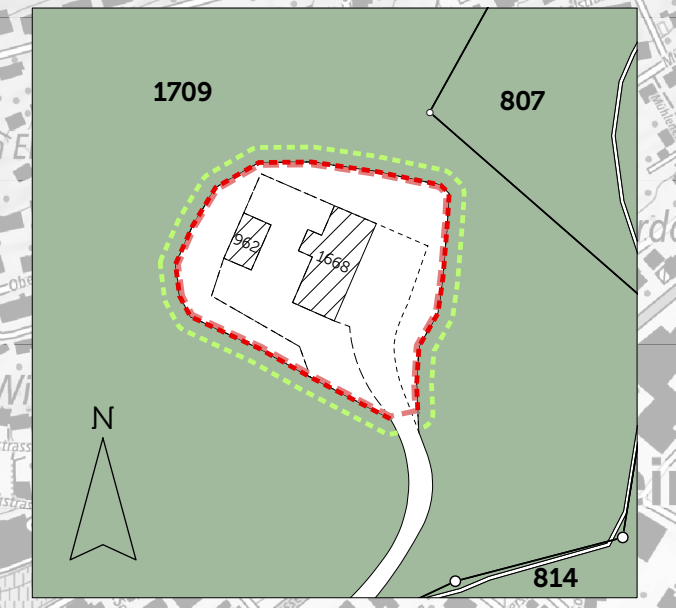
Hinweise

-  Wald (gemäss amtlicher Vermessung)
-  Waldgrenze vom Kantonsforstamt erlassen
-  Stockgrenze vom Kantonsforstamt erlassen
-  Baugebiet
-  Gewässer, offen | eingedolt
-  Parzelle, projektiert
-  Hochspannungsfreileitung
-  Gemeindegrenze
-  Kantonsgrenze



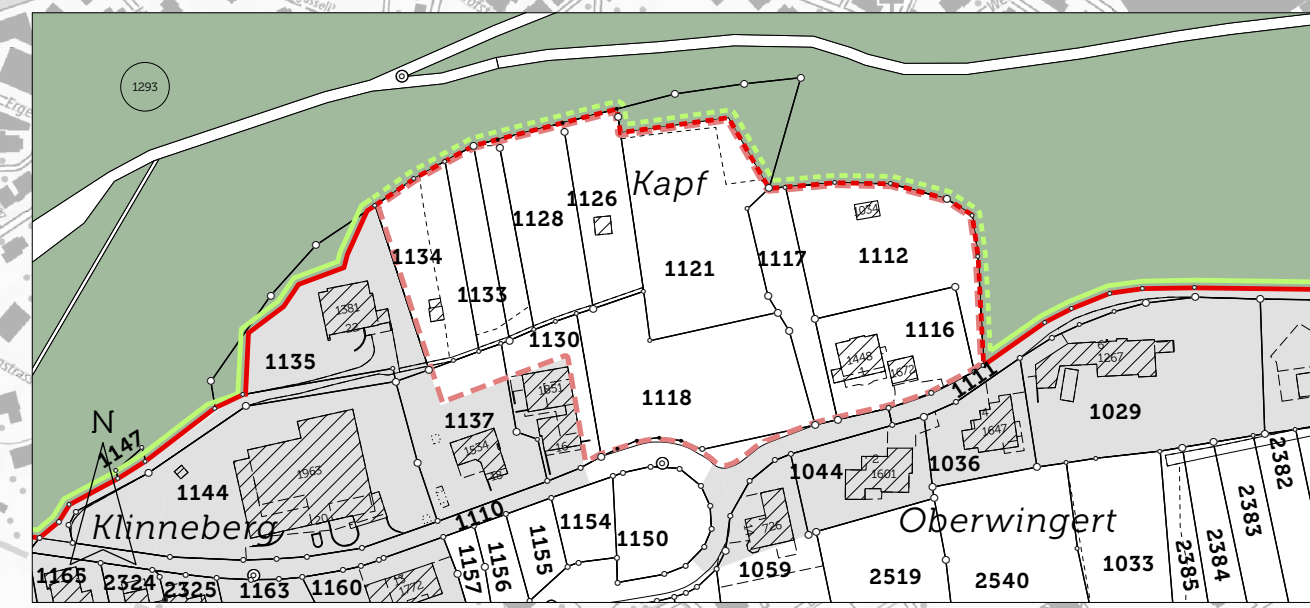
Humpeler Nord | M 1:1'000

Humpeler Süd | M 1:1'000



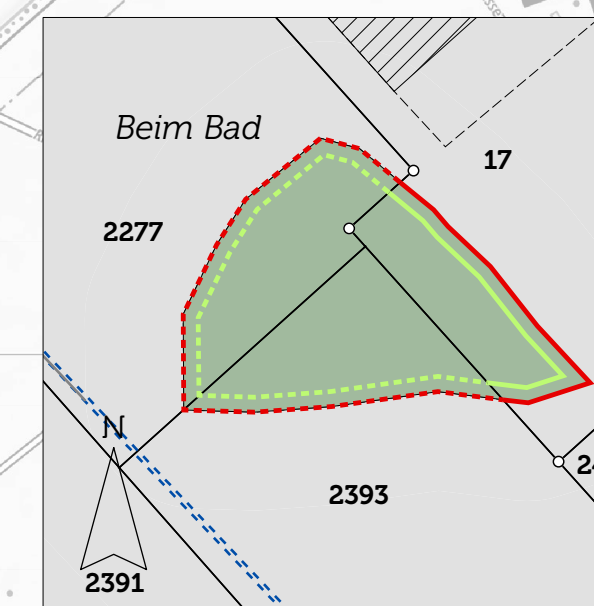
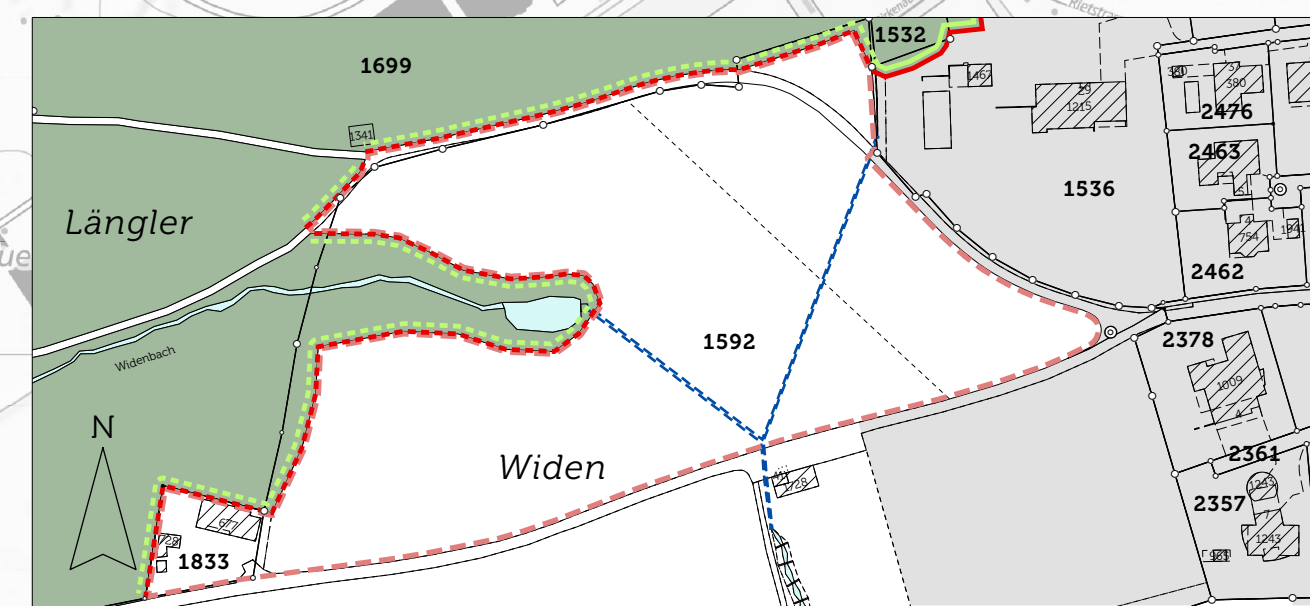
Kapf Ost | 1:2'000

Sonnenberg | M 1:2'000



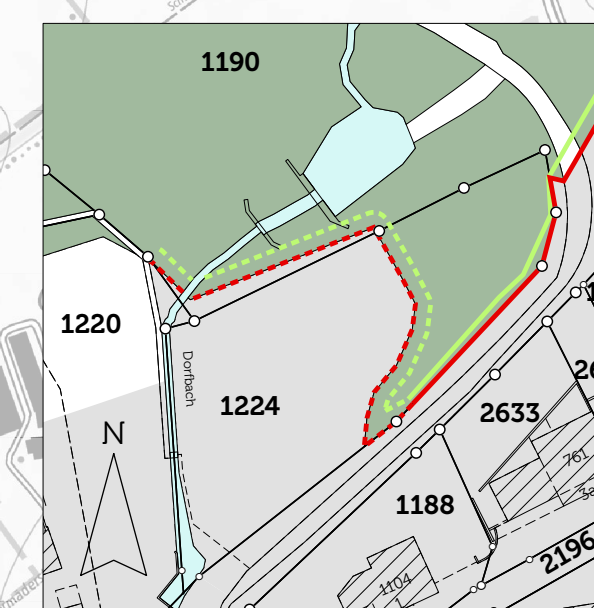
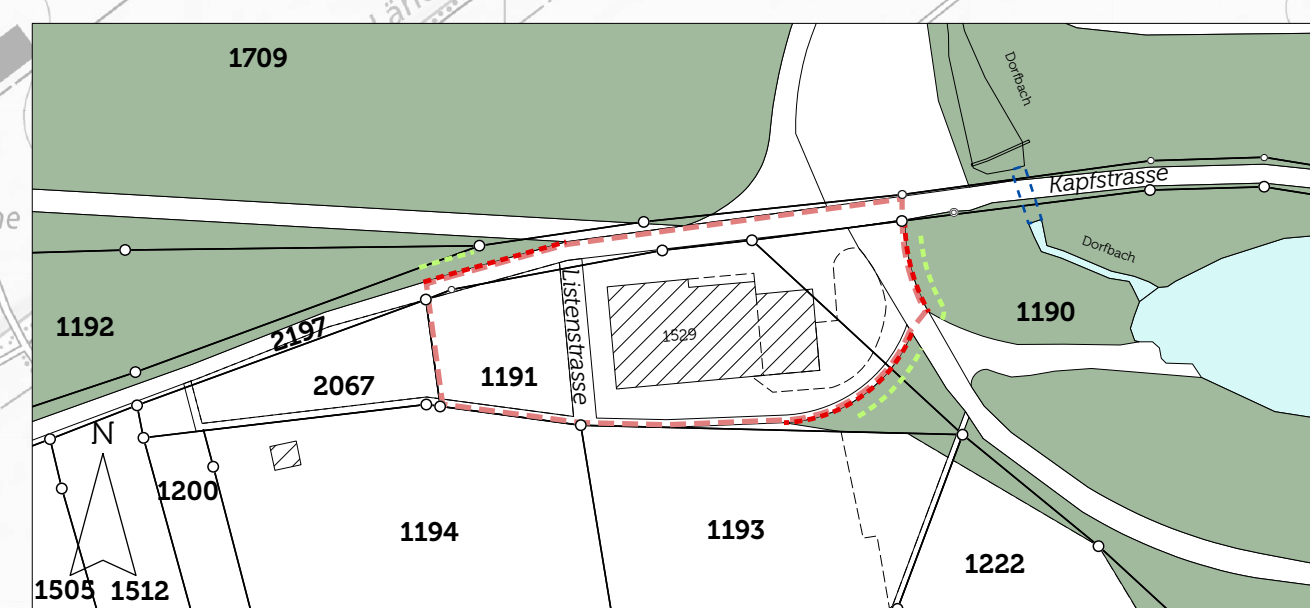
Widen | M 1:2'000

Beim Bad | M 1:1'000



Kapf West | M 1:1'000

Dorfbach | M 1:1'000



Längler | M 1:2'000



Grünsteinerafeld | M 1:2'000

